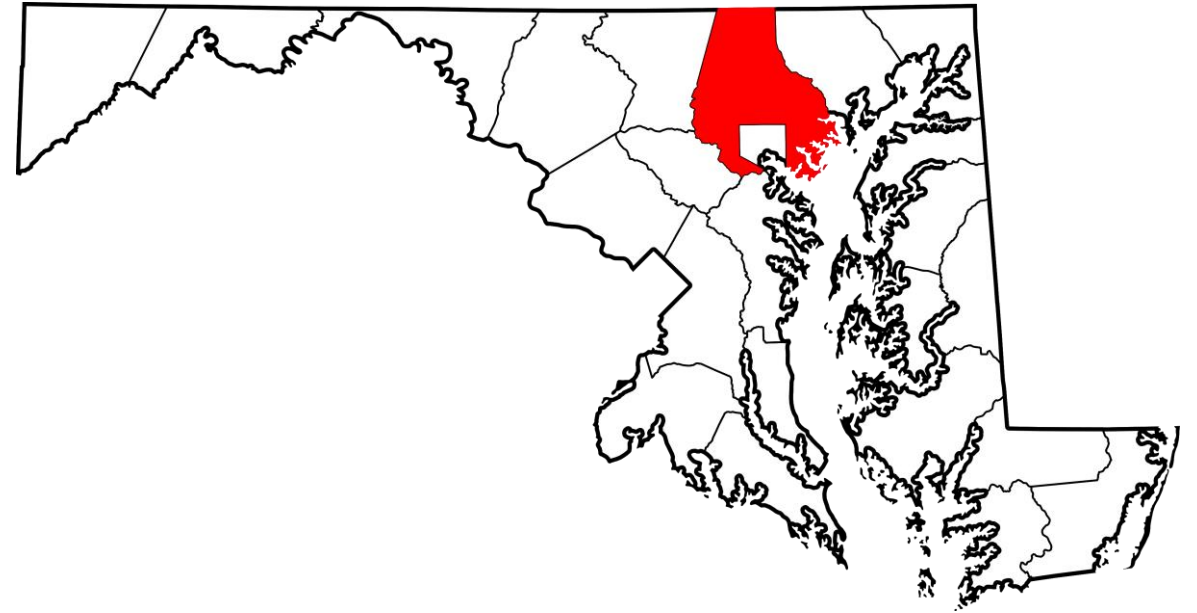




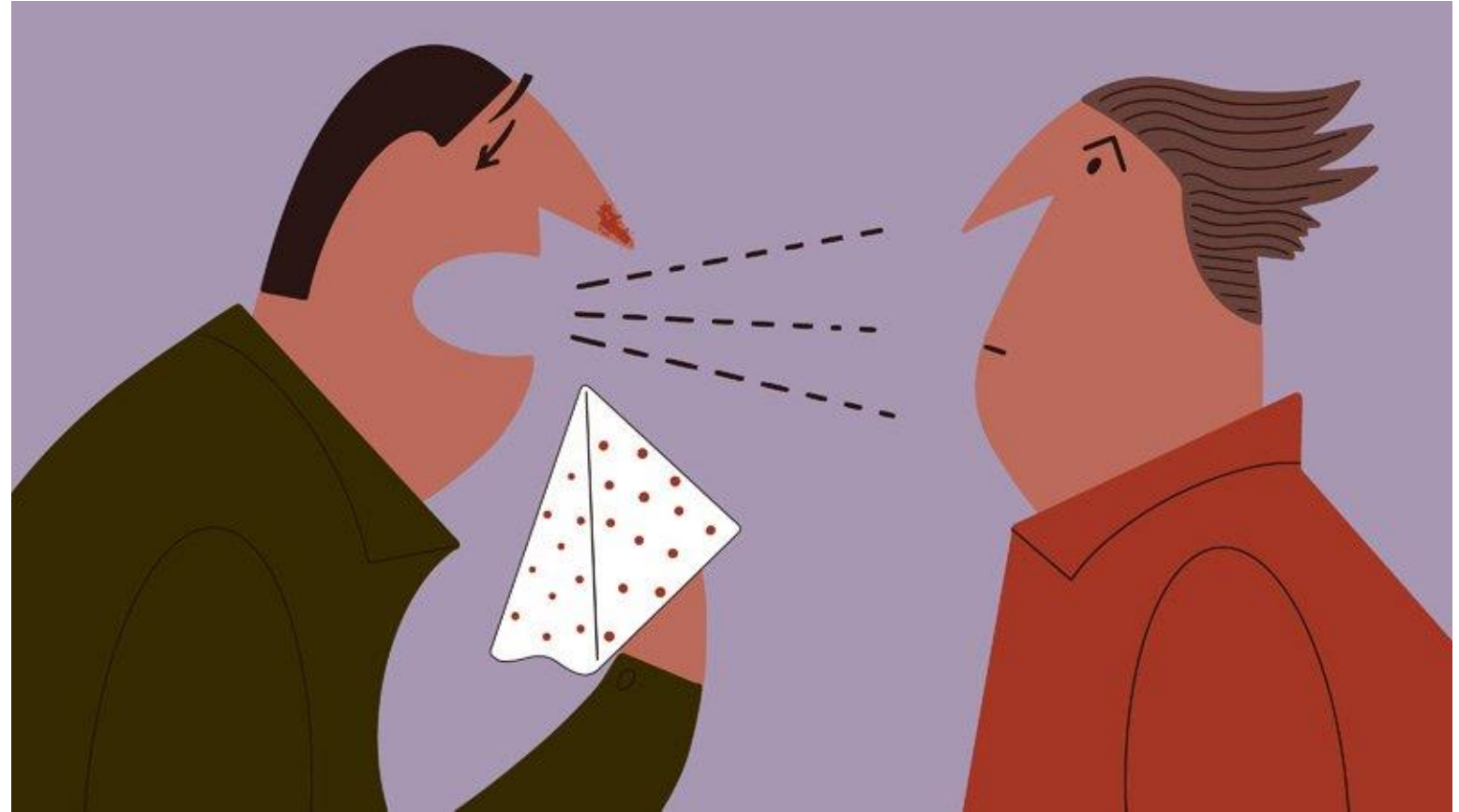
# How to Keep Schools Safe in Reopening

**MOURN THE  
DEAD  
FIGHT  
LIKE HELL  
FOR THE  
LIVING**

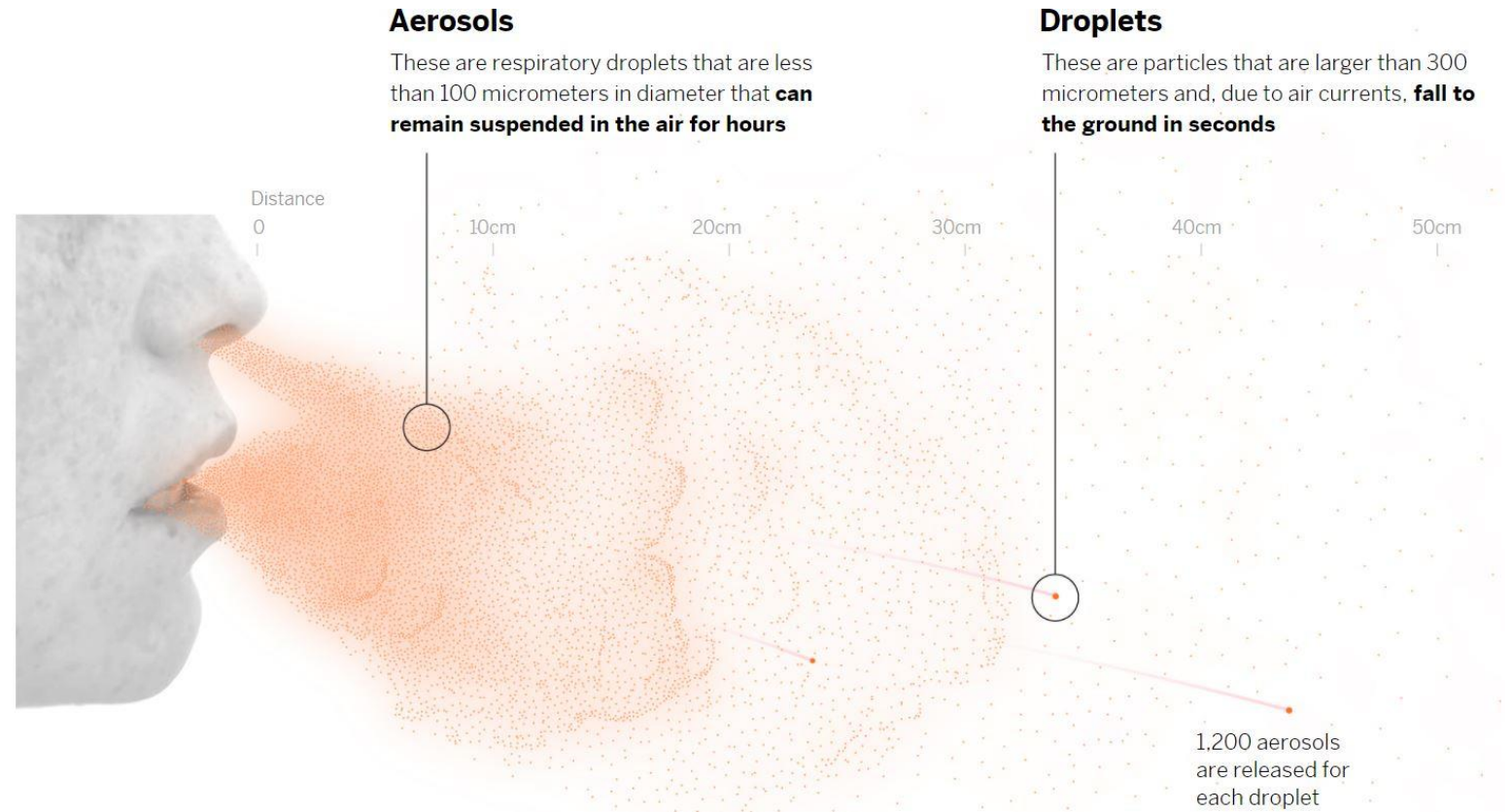
ACT UP NY, printed by Camp Books 06.04.19



# The Why



Know the risk  
to mitigate the  
risk



# Aerosol Spread

Each orange dot represents a **dose of respiratory particles capable of infecting** someone if inhaled

**Silent**



**2 minutes**



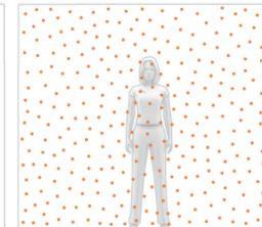
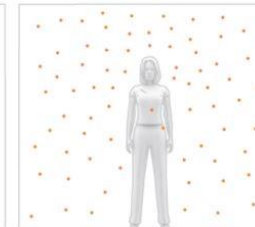
**15 minutes**



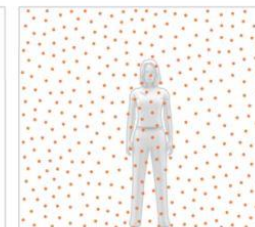
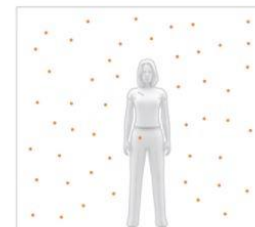
**1 hour**



**Talking**



**Shouting or singing**

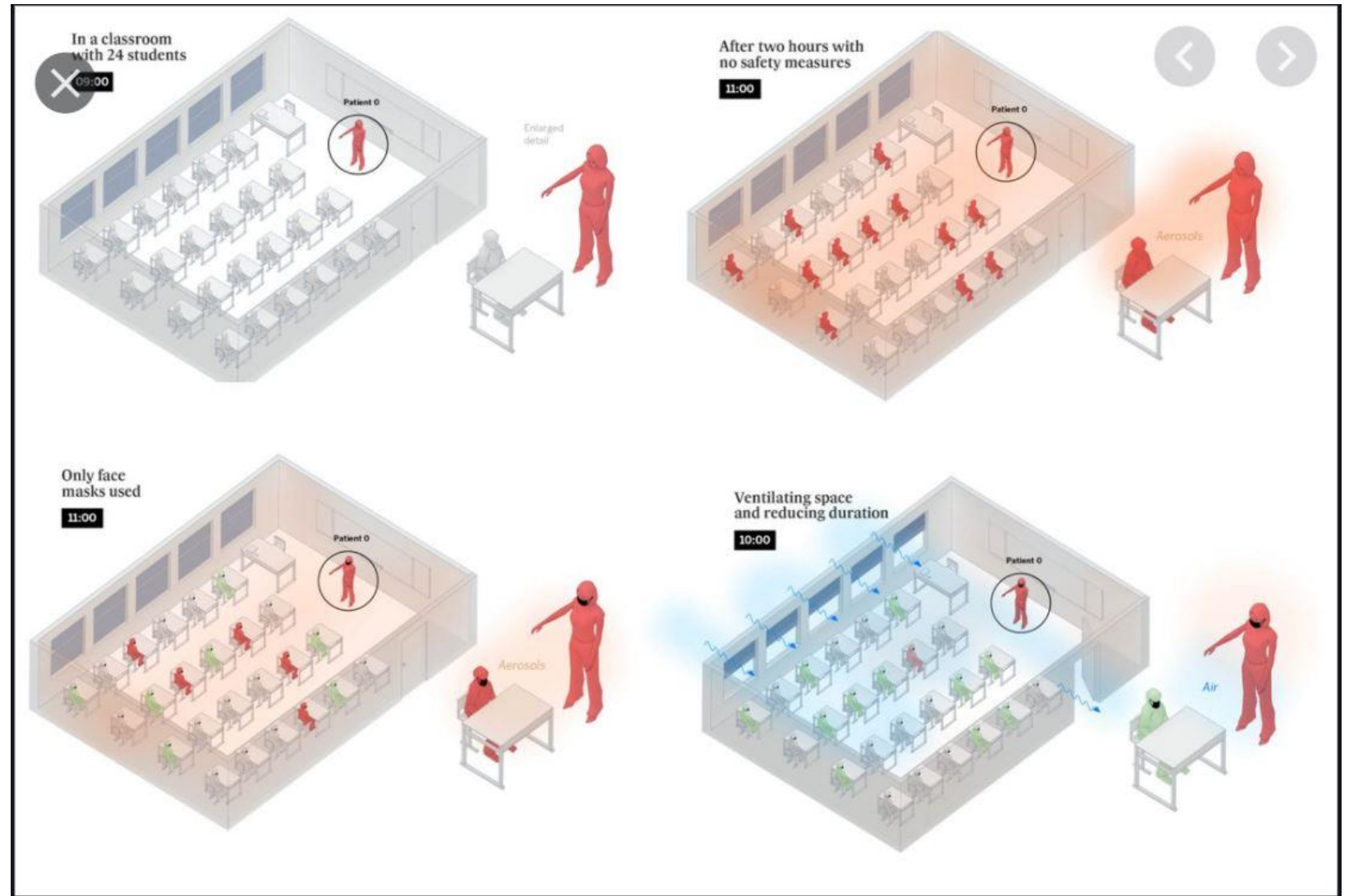


We emit **10 times** the number of particles **talking than we do when silent**

We emit **50 times** the number of particles **shouting than we do when silent**

In the worst case scenario – shouting or singing in a closed space for an hour – a person with Covid-19 releases **1,500 infectious doses.**

# Classroom scenarios




# Terminology


- Close-Contact
  - relates to exposure to individuals with COVID-19 and is defined by the Centers for Disease Control and Prevention (CDC) as being within 6 feet of an infected person for a cumulative total of 15 minutes or more over a 24-hour period, regardless of whether face coverings are being worn.
- COVID-19-like illness
  - when a person has Any 1 of the following: cough, shortness of breath, difficulty breathing, new loss of taste or smell; OR At least 2 of the following: fever of 100.4 or higher (measured or subjective), chills or shaking chills, muscle aches, sore throat, headache, nausea or vomiting, diarrhea, fatigue, and congestion or runny nose. Identification of persons with COVID-19-like illness is used to exclude persons from school, to identify who should be tested for COVID-19, and to identify persons who may need close contacts quarantined.
- Isolation
  - used to separate people infected with the virus (those who are sick with COVID-19 and those with no symptoms) from people who are not infected.
- Outbreak
  - An outbreak is two or more cases
- Quarantine
  - used to keep someone who might have been exposed to COVID-19 away from others.

# Your new tool: Health and Safety Committee

Our goal: Share Health and Safety Checklist to empower members in each work site to organize and ensure a health and safety.



Each bargaining unit determines who is part of the Safety and Emergency Management Team



Include TABCO, ESPBC, AFSCME, CASE and OPE representation (if available in the worksite)



# Role of Safety and Emergency Management Team



Create a building standard of addressing concerns



Monitor and assess the implementation of health and safety guidelines for BCPS worksites



Keep staff abreast of the process and role of the committee

Training during faculty meeting  
Share process for documenting concerns  
Committee share follow-up of concerns with the staff

# How the Committee Functions

- Conduct checklist review regularly (before worksite reopens and regularly once the site reopens)
- Staff share results with administration
  - Pictures
  - Specific anecdotal stories, including room numbers or affected staff
- Administration has 2 workdays to respond
  - If a response is not received or situation resolved, TABCO and ESPBC are prepared to exercise escalating tactics
    - Documented concern shared with administration
    - Grievance
    - Staff not physically reporting to affected areas

# How the Checklist Works

| HEALTHY ENVIRONMENT   | Yes                      | No                       | Not Checked              |
|---|--------------------------|--------------------------|--------------------------|
| A building level health and safety team that includes association representation from each bargaining unit, teachers, support staff, and administration has been established. | <input type="checkbox"/> | <input type="checkbox"/> | <input type="checkbox"/> |
| A workplace hazard assessment has been conducted for the building/workplace and specific jobs/positions in the building.  | <input type="checkbox"/> | <input type="checkbox"/> | <input type="checkbox"/> |
| <b>Notes:</b> Click or tap here to enter text.  |                          |                          |                          |

| AIR QUALITY  | Yes                      | No                       | Not Checked              |
|--|--------------------------|--------------------------|--------------------------|
| The building HVAC systems have been tested to ensure the systems are working properly.   | <input type="checkbox"/> | <input type="checkbox"/> | <input type="checkbox"/> |
| Tests indicate adequate air flow and air quality based upon the occupancy of the space   |                          |                          |                          |
| Local exhaust ventilation in areas such as restrooms, kitchen have been inspected  |                          |                          |                          |
| There is an annual maintenance program in place for the HVAC systems.  |                          |                          |                          |
| Outdoor air dampers are opened (as high as 100%) to reduce or eliminate recirculation, as appropriate per weather conditions. <i>In cold weather additional heat shall be run and in high heat additional AC shall be used to compensate</i> |                          |                          |                          |
| Steps have been taken to improve central air filtration (upgraded filters, etc.).  |                          |                          |                          |
| Fans are provided to increase circulation of outdoor air (air is not directed to blow from one person onto another).   |                          |                          |                          |
| Any necessary repairs have been fixed  |                          |                          |                          |
| All windows open. <i>In cold weather additional heat shall be run and in high heat additional AC shall be used to compensate</i>   |                          |                          |                          |
| The HVAC system is run at maximum outside airflow for 2 hours before and after school is occupied.   |                          |                          |                          |
| Portable high efficiency particulate air (HEPA) fan/filtration systems are used to enhance air cleaning  |                          |                          |                          |
| Fans are provided to increase air exchange with the outside (air is not directed to blow from one person onto another).  |                          |                          |                          |
| <b>Notes:</b> Click or tap here to enter text.   |                          |                          |                          |

| SOCIAL DISTANCING: | Yes | No | Not Checked |
|--------------------|-----|----|-------------|
|--------------------|-----|----|-------------|

# Resources Available

- Assigned UniServ Director
- [BCPS FAQ for Return-to-Work Concerns](#)
- [BCPS Reopening Plan](#)
- [CDC Guidelines for Schools in COVID](#)
- [El Pais Article on Aerosol and Droplet Spread Models](#)
- [MSEA Reopening Checklist](#)
- [NEA COVID Case Tracker](#)
- TABCO and ESPBC Reopening MOU
- [TABCO](#) and [ESPBC](#) Master Agreement